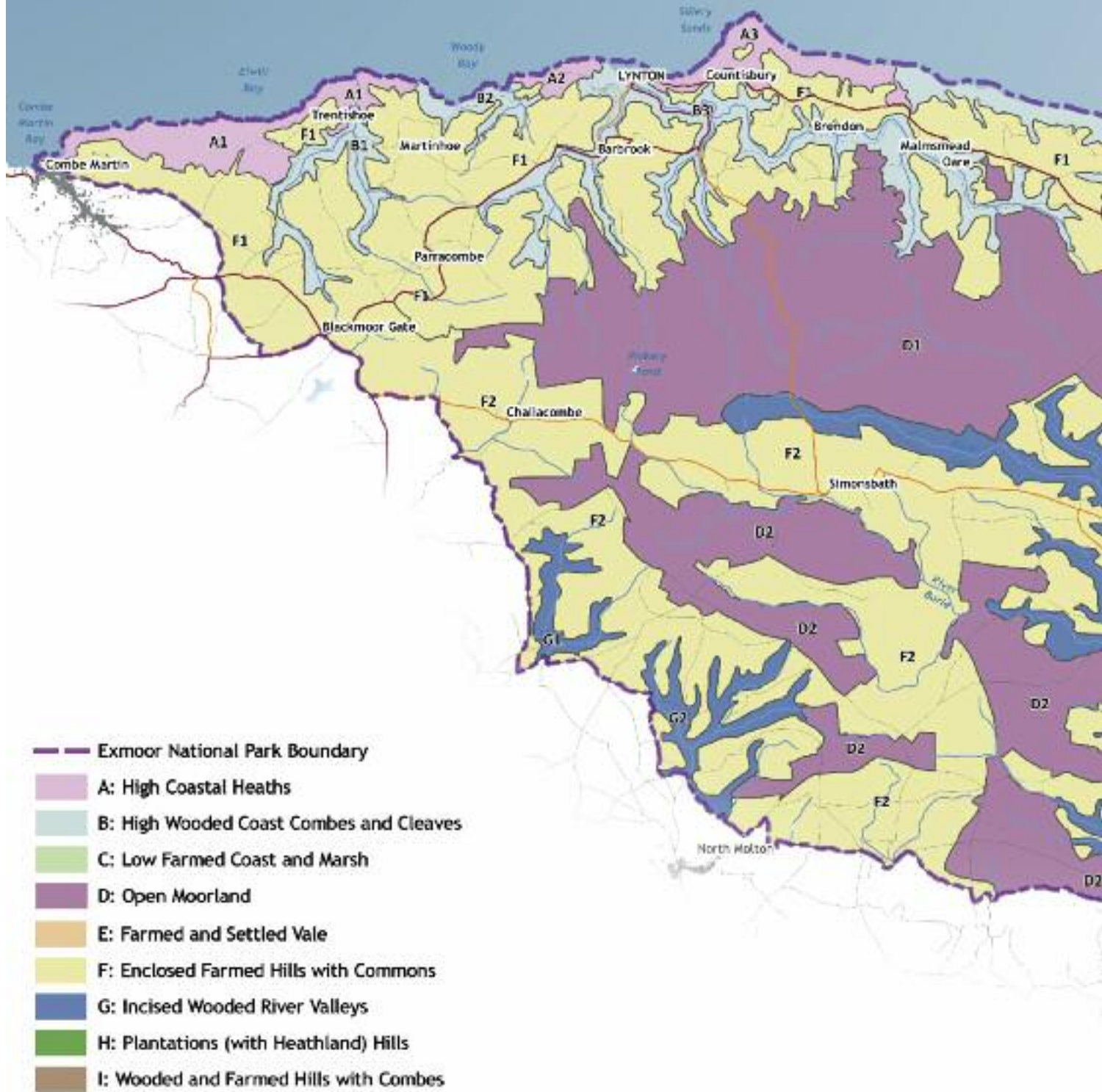


Part 4: Landscape Character Assessment of Exmoor



View from Kitridge Lane
towards Withypool Common

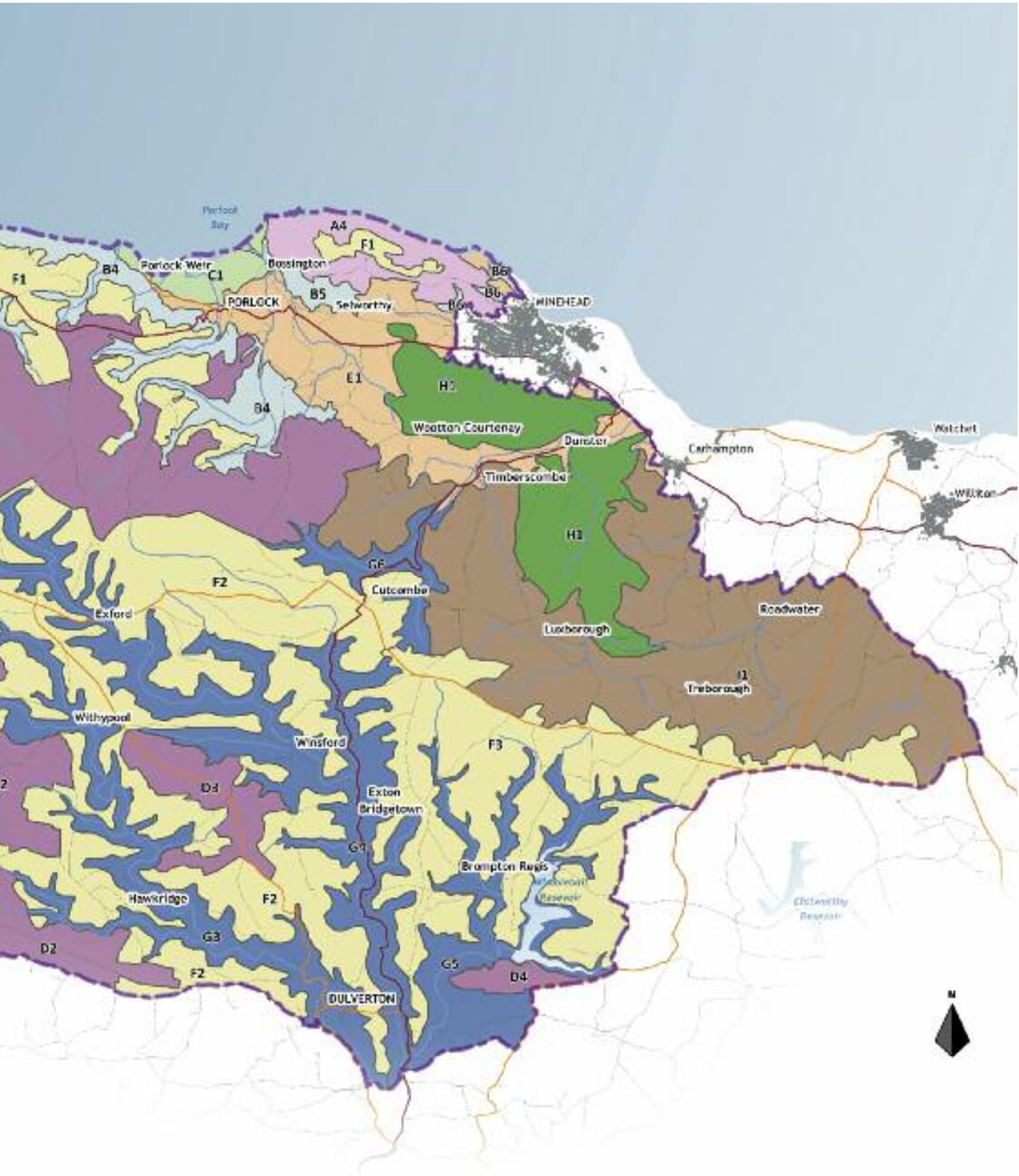
Map 5: Landscape Character Types and Areas



Scale 1: 130,000



© Crown copyright and database rights 2018 Ordnance Survey 100024878



Landscape Character Assessment

4.1 Exmoor's Landscape Character Types and Areas

Landscape Character Type (LCT)	Landscape Character Area (LCA)
A: High Coastal Heaths	A1: Holdstone Down, Trentishoe & Heddon's Mouth
	A2: Valley of Rocks
	A3: The Foreland
	A4: North Hill
B: High Wooded Coast Combes and Cleaves	B1: Heddon Valley
	B2: Woody Bay
	B3: Lyn
	B4: Culbone - Horner
	B5: Bossington
	B6: Culver Cliff
C: Low Farmed Coast and Marsh	C1: Porlock
D: Open Moorland	D1: Northern
	D2: Southern
	D3: Winsford Hill
	D4: Haddon Hill
E: Farmed and Settled Vale	E1: Porlock - Dunster - Minehead
F: Enclosed Farmed Hills with Commons	F1: Northern
	F2: Southern
	F3: Eastern
G: Incised Wooded River Valleys	G1: Bray
	G2: Mole
	G3: Barle
	G4: Exe
	G5: Haddeo
	G6: Avill
H: Plantation (with Heathland) Hills	H1: Croydon and Grabbist
I: Wooded and Farmed Hills with Combes	I1: The Brendons

Landscape Character Types

Landscape Character Types are distinct types of landscape that are relatively homogenous in character. They are generic in nature in that they may occur in different areas...but wherever they occur they share broadly similar combinations of geology, topography, drainage patterns, vegetation, historical land use, and settlement pattern¹.

4.1.1 As shown in **Map 5** and the accompanying table, Exmoor contains an intricate and unique mix of distinctive landscape types including moorland, farmland and woodland. The 2007 Exmoor Landscape Character Assessment identified, mapped and described nine distinctive Landscape Character Types (LCTs) within Exmoor National Park.

4.1.2 The remainder of Part 4 contains a series of profiles which describe each of the Landscape Character Types in detail, including descriptions of the Landscape Character Areas within them. Each of the nine Landscape Character Type profiles contains the following sections:

- Summary description
- Location map
- Key characteristics
- Natural landscape features
- Historic landscape features and the built environment
- Landscape perceptions and cultural associations
- Natural Assets and ecosystem services
- Landscape Character Areas within the Landscape Character Type
- Seascape Character Areas associated with the Landscape Character Type
- Strength of landscape character and landscape condition
- Forces for change and landscape sensitivities
- Landscape management recommendations
- Specific planning guidelines

Landscape Character Areas

Landscape Character Areas are single unique areas which are the discrete geographical areas of a particular landscape type. Each area has its own individual character and identity, even though it shares the same generic characteristics with other areas of the same type².

4.1.3 The nine LCTs were subdivided into unique Landscape Character Areas (LCAs), each with a distinctive sense of place. These divisions have worked well in practice and therefore are being retained in this update. The only boundary change resulting from this update was the splitting of LCT F into three LCAs when it was formerly two very large ones, creating twenty-seven LCAs in total, as shown on **Map 5**, and in the accompanying table.

¹ *An Approach to Landscape Character Assessment* (Natural England, 2014) p.54.

² *An Approach to Landscape Character Assessment* (Natural England, 2014) p.54.