

With the Wild CIC & Higher Barn Farm
Progress Summary September 2024



WITH
THE
WILD
C I C



Motivation

We are motivated by a deep concern for nature and a desire to work towards a resilient future, mitigating the effects of climate change, adapting to changes that are already inevitable and increasing biodiversity. We want to regenerate ecosystems and educate ourselves and others about regenerative ecological design, agro-ecology and healthy, sustainable, self-sufficient ways of living. In July 2020 we acquired Higher Barn Farm, a small 7.5ha farm in the eastern foothills of Exmoor near Roadwater. The land had previously been used to grow wheat using traditional industrial agriculture methods. Our vision was to transform this parcel of land to become a diverse and thriving ecosystem - full of wildlife and nourishing organic food - that we could share with the local community. We have spent the past four years turning this vision into reality.

With the Wild CIC is an established community benefit company which:

- Has created an organic and diverse agroforestry system; growing ecological food for the local community, providing resilience in the face of climate change and supporting biodiversity.
- Provides educational and training opportunities in agroecology, agroforestry, permaculture, food preparation and preserving, traditional skills, sustainable building techniques and natural materials.
- Supports a relocalised circular economy - one that is human scale, non-commodity and grounded in friendship and collaboration.
- Works in partnership with other local businesses, schools, organisations and community groups to work towards Net Zero and a more resilient future.
- Provides sustainable livelihoods through the provision of 'green' jobs, training opportunities and apprenticeships.
- Sequesters carbon & increases biodiversity through the use of agroecological techniques and agroforestry systems at Higher Barn Farm.

About this Document

This document has been prepared to report on the progress of With the Wild CIC as of September 2024. The following pages set out our achievements so far and the projects that we intend to progress in the next year.

Regenerative Plans for Higher Barn Farm

Slade Lane, Roadwater, Watchet, TA23 0LY

WORKING PROPOSALS NOVEMBER 2020

With thanks to The Apricot Centre and our other friends and mentors we have produced this initial Farm plan following permaculture design principles and under the guidance of Marina Brown-O'Connell.

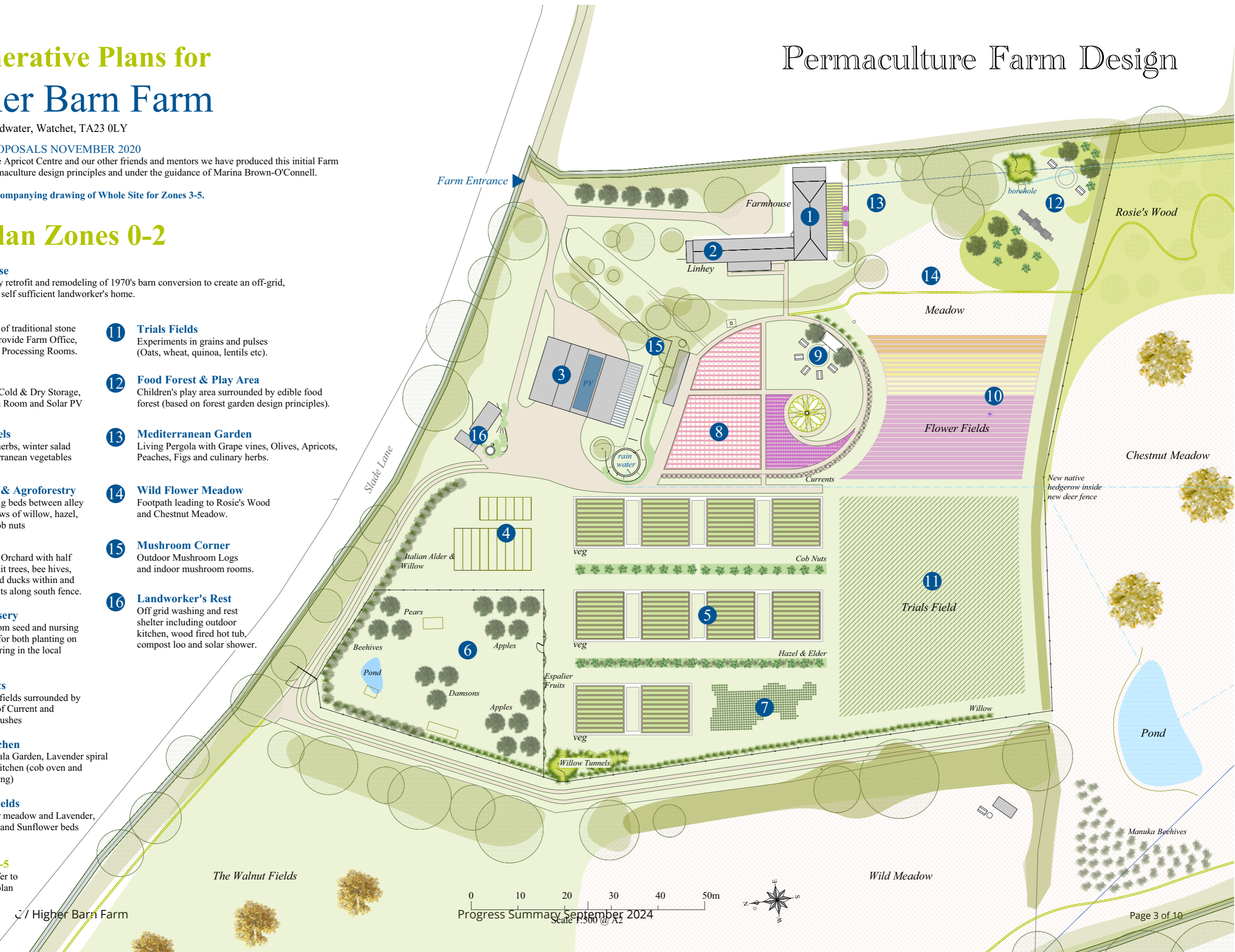
Please also see accompanying drawing of Whole Site for Zones 3-5.

Site Plan Zones 0-2

- 1 Farmhouse**
Deep energy retrofit and remodeling of 1970's barn conversion to create an off-grid, low energy, self sufficient landworker's home.
- 2 Linhey**
Conversion of traditional stone Linhey to provide Farm Office, Teaching & Processing Rooms.
- 3 Big Barn**
Workshop, Cold & Dry Storage, Propagation Room and Solar PV (on roof)
- 4 Polytunnels**
Tomatoes, herbs, winter salad and Mediterranean vegetables
- 5 Veg Beds & Agroforestry**
10x10 no-dig beds between alley cropping rows of willow, hazel, elder and cob nuts
- 6 Orchard**
Polyculture Orchard with half standard fruit trees, bee hives, chickens and ducks within and espalier fruits along south fence.
- 7 Tree Nursery**
Growing from seed and nursing small trees for both planting on site and sharing in the local community
- 8 Soft Fruits**
Strawberry fields surrounded by Arc hedge of Current and Blueberry bushes
- 9 Field Kitchen**
Herb Mandala Garden, Lavender spiral and Field Kitchen (cob oven and outdoor eating)
- 10 Flower Fields**
Wild flower meadow and Lavender, Cut Flower and Sunflower beds
- 11 Trials Fields**
Experiments in grains and pulses (Oats, wheat, quinoa, lentils etc).
- 12 Food Forest & Play Area**
Children's play area surrounded by edible food forest (based on forest garden design principles).
- 13 Mediterranean Garden**
Living Pergola with Grape vines, Olives, Apricots, Peaches, Figs and culinary herbs.
- 14 Wild Flower Meadow**
Footpath leading to Rosie's Wood and Chestnut Meadow.
- 15 Mushroom Corner**
Outdoor Mushroom Logs and indoor mushroom rooms.
- 16 Landworker's Rest**
Off grid washing and rest shelter including outdoor kitchen, wood fired hot tub, compost loo and solar shower.

Zones 3-5
Please refer to separate plan overleaf.

Permaculture Farm Design



© Higher Barn Farm

Progress Summary September 2024
Scale 1:500 @ A2

Regenerative Plans for Higher Barn Farm

Slade Lane, Roadwater, Watchet TA23 0LY

WORKING PROPOSALS NOVEMBER 2020

With thanks to The Apricot Centre and our other friends and mentors we have produced this initial Farm plan following permaculture design principles and under the guidance of Marina Brown-O'Connell.

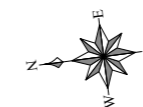
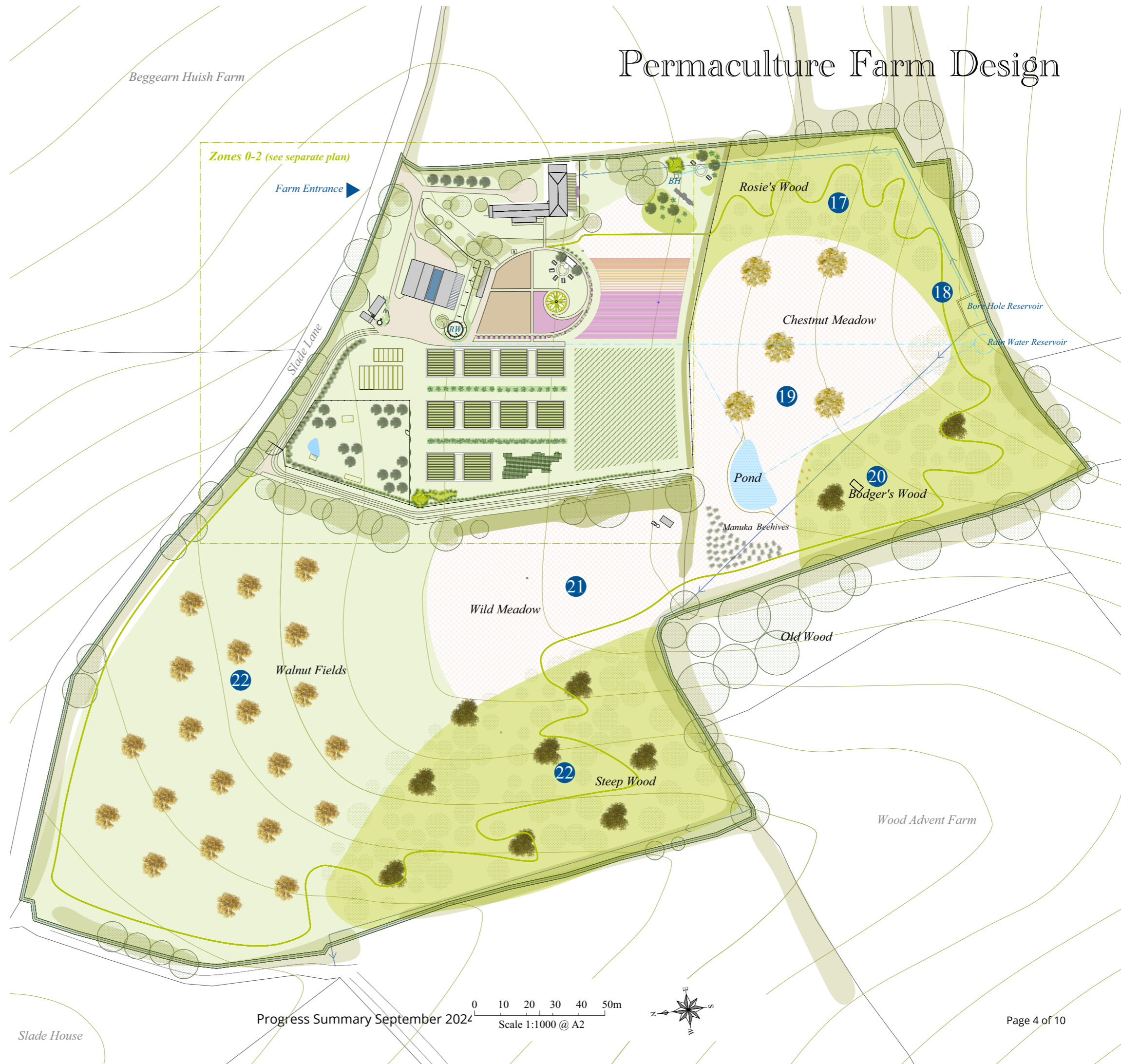
Please also see accompanying drawing for details of Zones 0-2.

1-16 Zones 0-2
The Farmhouse, Farm Buildings and Primary Growing Areas - Please refer to separate plan overleaf.

Site Plan Zones 3-5

- 17 Rosie's Wood**
Native woodland with foraging bush trail and wild mushrooms.
- 18 Rosie's View**
(Rosie is a name for everybody). Fantastic views over the farm and beyond towards the coast and over to Wales (on a clear day) flanked by views of North Hill to the west and the Quantock Hills to the east.
- 19 Chestnut Meadow**
Wild flower meadow and pasture with Sweet Chestnuts, Cherry Trees, Manuka plantation, Beehives and wildlife/wild swimming pond.
- 20 Bodger's Wood**
Native woodland edged with mahonia and Cherry trees with foraging trails, fire pits and glades for woodland skills and crafts.
- 21 Wild Meadow**
Wild flowers for insects, butterflies and bees with land worker's retreat in corner nook.
- 22 Steep Wood**
Native woodland with wildlife and woodland play trail and wildlife watching/teaching hides. Trees selected for fuel, building timber, ramial wood chips, Biochar, biodiversity and fun.
- 23 Walnut Fields**
Agroforestry rows of nutting Walnut Trees on and perpendicular to contour with rotation grain crops between (potentially oats, wheat, quinoa, buckwheat and lentils).

Permaculture Farm Design




Achievements So Far

Since moving to Higher Barn Farm in July 2020 our achievements have included:

- establishing With the Wild CIC (see details on previous page)
- undertaking training and research in agroecology, permaculture, agroforestry and field to fork processes including researching and training in sourdough baking and fermentation
- creating a holistic farm plan based on permaculture principles
- sowing a deep rooting green manure mix across the entire site to “kick start” the regeneration of the soil
- establishing a community no-dig market garden; integrating agroforestry rows of hazel, elder and cobnuts and producing a wide range of organic vegetables for the local community - sold in collaboration with Roadwater Community Shop
- installing a sustainable irrigation system including a 5400l rainwater harvesting tank (part of FiPL project EX023)
- installing stock-proof fencing to protect new woodlands and to enable rotational grazing (part of FiPL project EX023)
- planting about 600 trees as hedging/shelter belt
- planting a further 2500 trees through the Woodland Trust More Trees programme - for wildlife, edible fruits/nuts and timber
- planting 40 fruit trees (part of FiPL project EX023) and 18 walnut trees to commence planting of agroforestry rows in “Walnut Fields”
- planting 400 hazel trees (part of FiPL project EX023) in conjunction with the provision of a series of community workshops providing an introduction to the principles and examples of agroforestry
- creating a fenced off fruit tree orchard which also houses hens (in a mobile home-constructed henhouse) and geese
- starting establishing a wildflower meadow (with support from ENPA meadows “Sowing the Seeds” scheme)
- erecting a small polytunnel, glasshouse and fruit cage
- undertaking grain trials in YQ, rye and heritage wheat varieties and collaborating with neighbouring farmers to grow, mill and
- bake ecological heritage grains in conjunction with South West Grain Network
- constructing prototype bicycle thresher and undertaking trials in no/min till wheat sowing methods
- establishing connections, collaborations and friendships with other farms and farmer
- designing and constructing a compost toilet
- designing and commencing planting of two food forest areas
- hosting a number of educational access and community visits including participating in Somerset Food Trail
- visiting local primary schools and providing sessions on the relationship between soil and human health and a series of “Taste Ed” sessions (part of FiPL project EX023)
- Purchasing first livestock: 5 x Exmoor Horn Sheep; 5 x Kune Kune Pigs; Hens, Geese and 2 x bee hives
- Providing a series of Summer Children’s Workshops - nature based crafts, wildlife exploration and cooking with fresh produce from the market garden (part of FiPL project EX023)



Plans for 2025

		2024 Oct	Nov	Dec	2025 Jan	Feb	Mar	April	May	June	July	Aug	Sept	Oct	Nov	Dec
Infrastructure & Tree Planting 	Ordering trees, materials and equipment															
	Organising volunteers and WWOOFers															
	Fencing, gates and water infrastructure															
	Tree planting - Zone 3															
	Tree planting - Zone 2															
	Construction of market garden no-dig beds															
	Fundraising for Polytunnels															
	Construction of Polytunnels															
	Construction of composting bays															
Wildflower meadows (with ENPA "Sowing the Seeds" project)		sowing seeds	grazing					growing				collect seeds & hay cut	grazing	sowing seeds	grazing	
Conservation Grazing Exmoor Ponies + Sheep																
Livestock																
Layer Hens					preparation		new hens arrive									
Sheep			Tupping				Lambing	Sheering								
Pigs						Estrus			Farrowing							
Roe Deer Conservation Management		Buck	Doe				Buck								Doe	
Educational Visits																
Farmer Training					CEVAS training	Consultation with Apricot Centre to develop educational programme										
School visits																
Permaculture Design Groups																
Summer Kids Workshops																
Community Events										Feast in the Field		Feast in the Field				
With the Wild Education Centre / Cookery School & Processing Barn																
Building design and specification																
Planning permission					PRE-APP				PLANNING APPLIACTION							
Technical Design																
Tender / costings																
Funding applications																
Construction																2026

Explore sustainable agriculture with our **Educational Farm Visits** at Higher Barn Farm, Exmoor



Discover the future of farming with **WITH THE WILD CIC**. Our farm is a thriving mixed agroforestry system, designed using permaculture principles to create a biodiverse, sustainable landscape that provides educational opportunities and ecological food for the local community.

Guided Agroforestry Tours
Permaculture Workshops
Hands-on Activities
Wildlife and Nature Exploration

Perfect for school trips
Our educational visits align with the national curriculum and provide students with a unique, hands-on experience that brings the concepts of sustainability and ecology to life. Join us for an Inspiring Educational Farm Visit!

Proposed Polytunnels & Photographs of existing site

Having established a thriving and abundant organic no-dig market garden supplying fresh produce directly to the local community we would like to increase production and extend the viable growing season by installing two large polytunnels. The tunnels will be located on the west side of the established no-dig beds in an area which is both accessible as part of the established market garden and screened from view from the surrounding landscape (please also see plans on following page).

The proposed polytunnels will:

- provide year-round, organic food for the local community - with low food miles and reduced carbon emissions - provided to the local community in collaboration with Roadwater Community Shop;
- provide a controllable environment for growing food, enabling reliable production in changing climate conditions, and thereby increasing the resilience of With the Wild CIC as a sustainable community interest company;
- enhance the provision of educational opportunities on the farm by providing additional sheltered learning space; &
- increase the production of fresh produce which is taken into local schools as part of the With the Wild Food & Farming Outreach Education programme including sensory food education that delivers the National Food Strategy recommendations.



View from east looking west across market garden.



View from south looking north across proposed polytunnel site

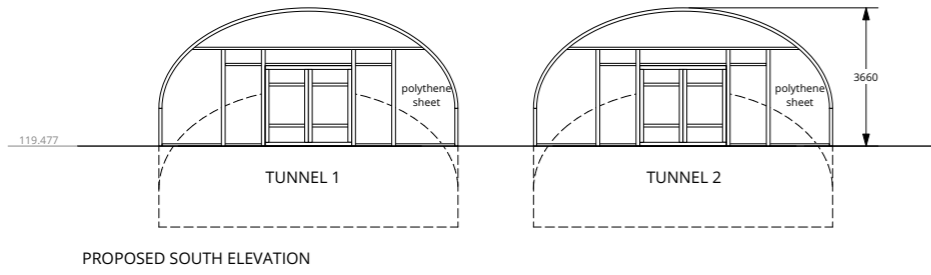


View from north looking south across proposed polytunnel site

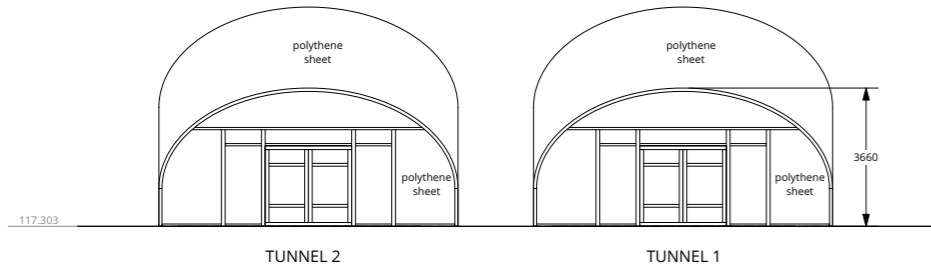


View from north looking south across market garden

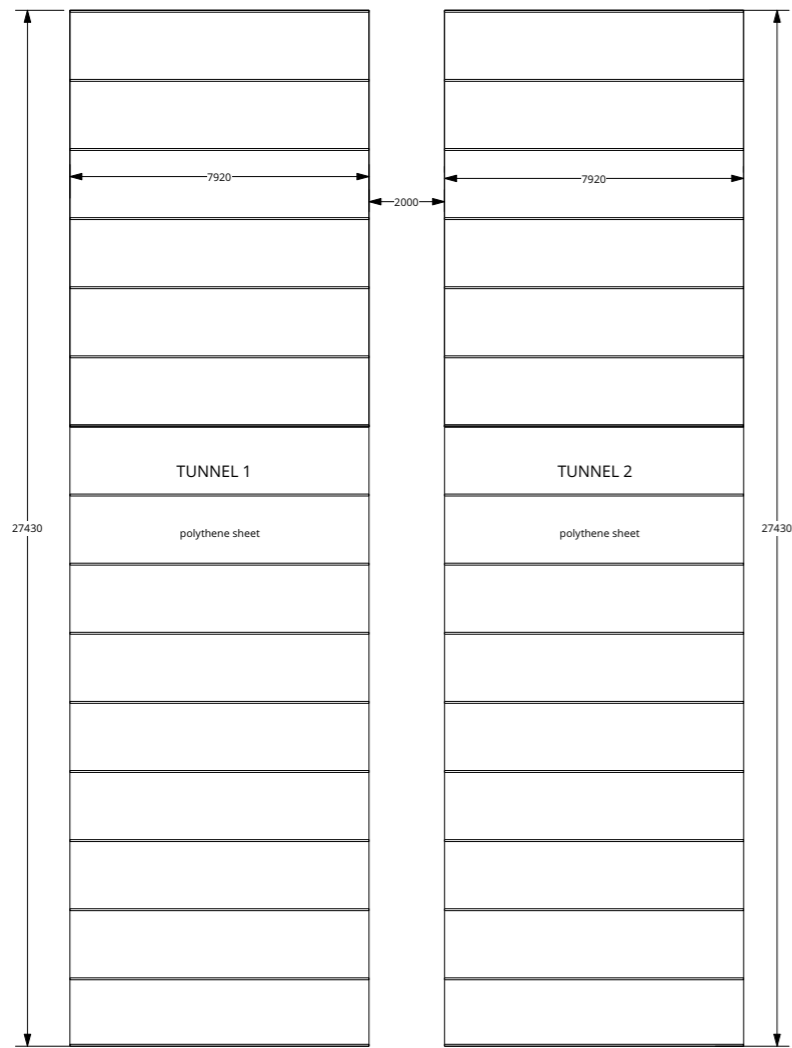
Polytunnel Plans, Sections & Elevations
Scale 1:100@A1 or 1:200@A3



PROPOSED SOUTH ELEVATION



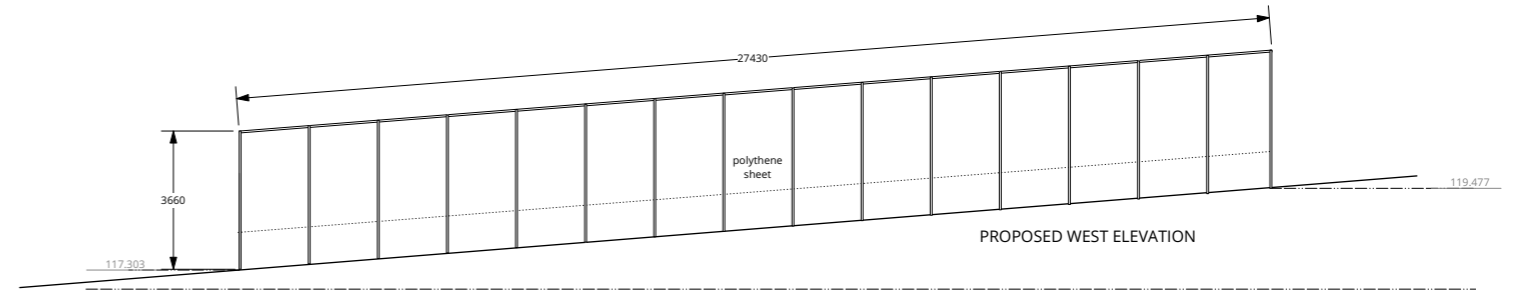
PROPOSED NORTH ELEVATION



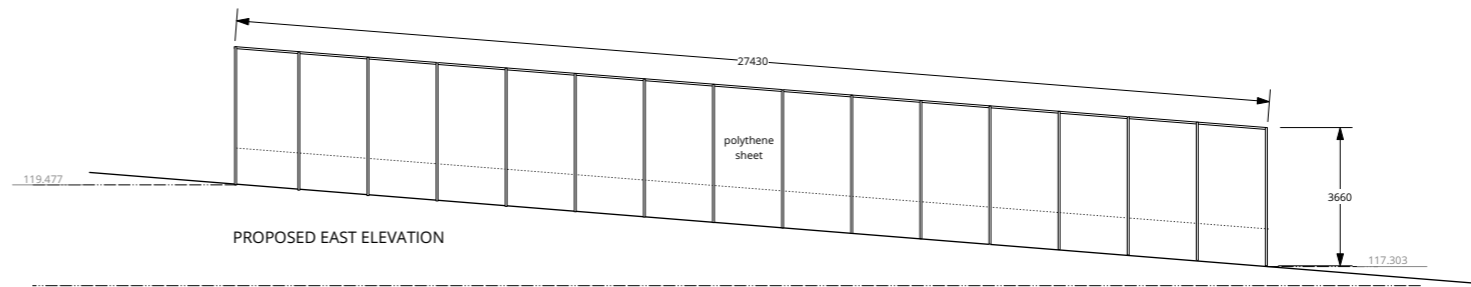
PROPOSED FLOOR & ROOF PLAN



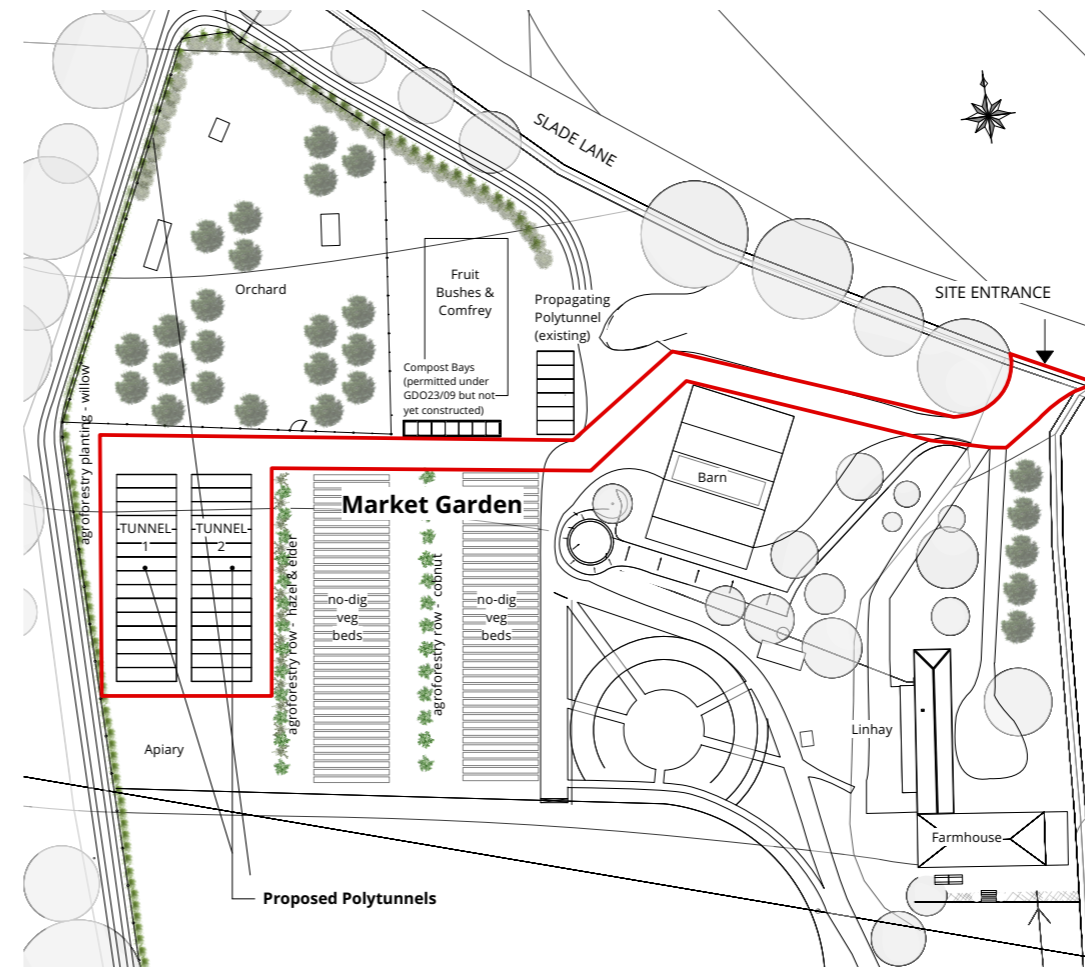
Proposed Polytunnels



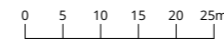
PROPOSED WEST ELEVATION



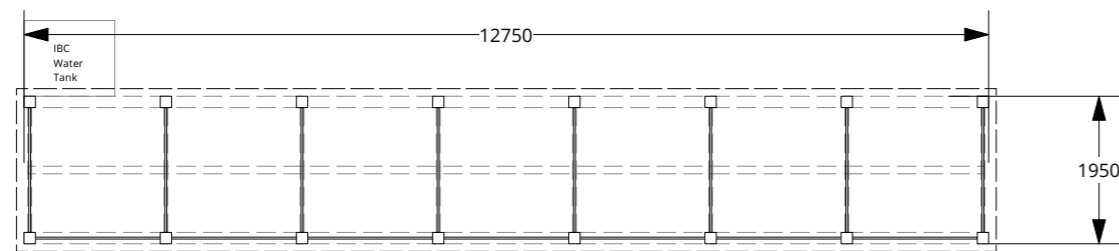
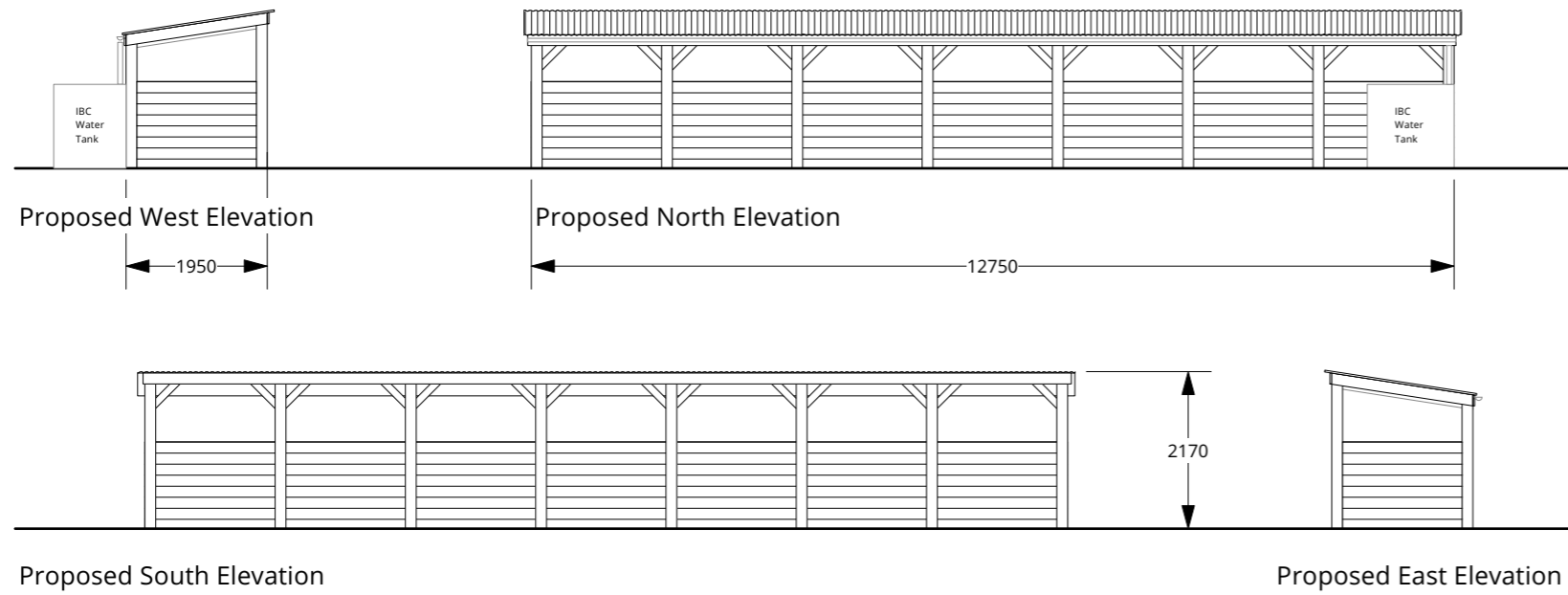
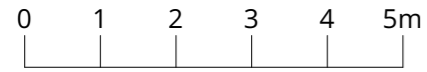
PROPOSED EAST ELEVATION



Market Garden Plan - Scale 1:500@A1 or 1:1000@A3



View looking north from within market garden area - white outline illustrating location of proposed composting bays

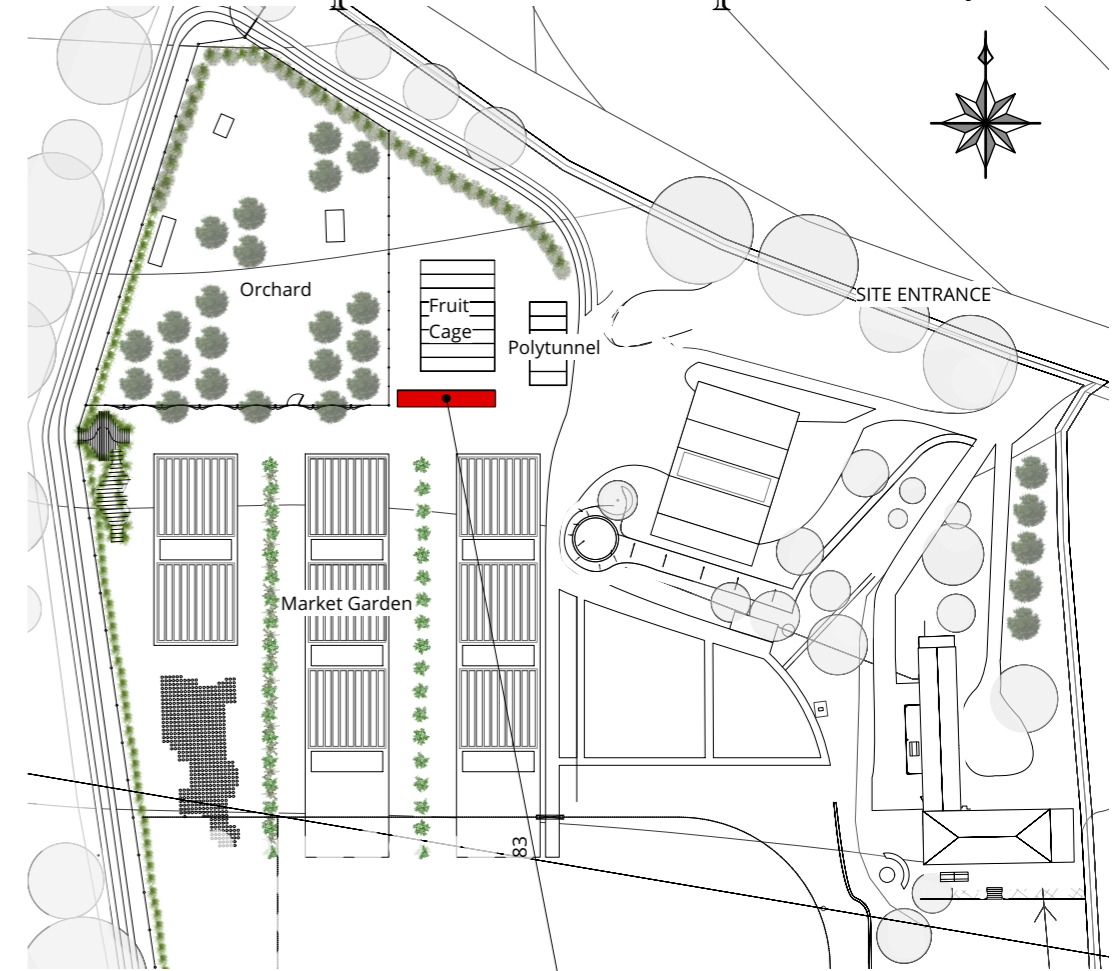


Proposed Floor Plan



Proposed Roof Plan

Proposed Compost Bays



Proposed Compost Bays

Materials

- 16no. 150x150 2.4m C24 Timber Posts set 300mm into ground and secured with postcrete
- 8no. 50x150 2.4m C24 Timber rafters
- 8no. 50 x 100 2.4 C24 Timber bracing
- 50 x 150 C24 Timber wallplates and purlin (38m)
- 25 x 150 UK Larch timber boarding to walls and fascias (254m)
- 22 no. 600wide cover Corrugated metal roofsheets 2.13m long (+ TEK screws)
- 100mm black pvc guttering (12.75m) with
- 14no fascia brackets and 75mm downpipe (2.5m)
- 2no gutter ends + 1 outlet

Rainwater Harvesting tank = 1000l Foodgrade IBC on pallet base



We are so grateful for all the support from the community to help develop this vital local project. To find out more and keep up to date please visit our website:

www.withthewild.co.uk

CONTACT: Cerys Dehaini info@withthewild.co.uk / 07709491003