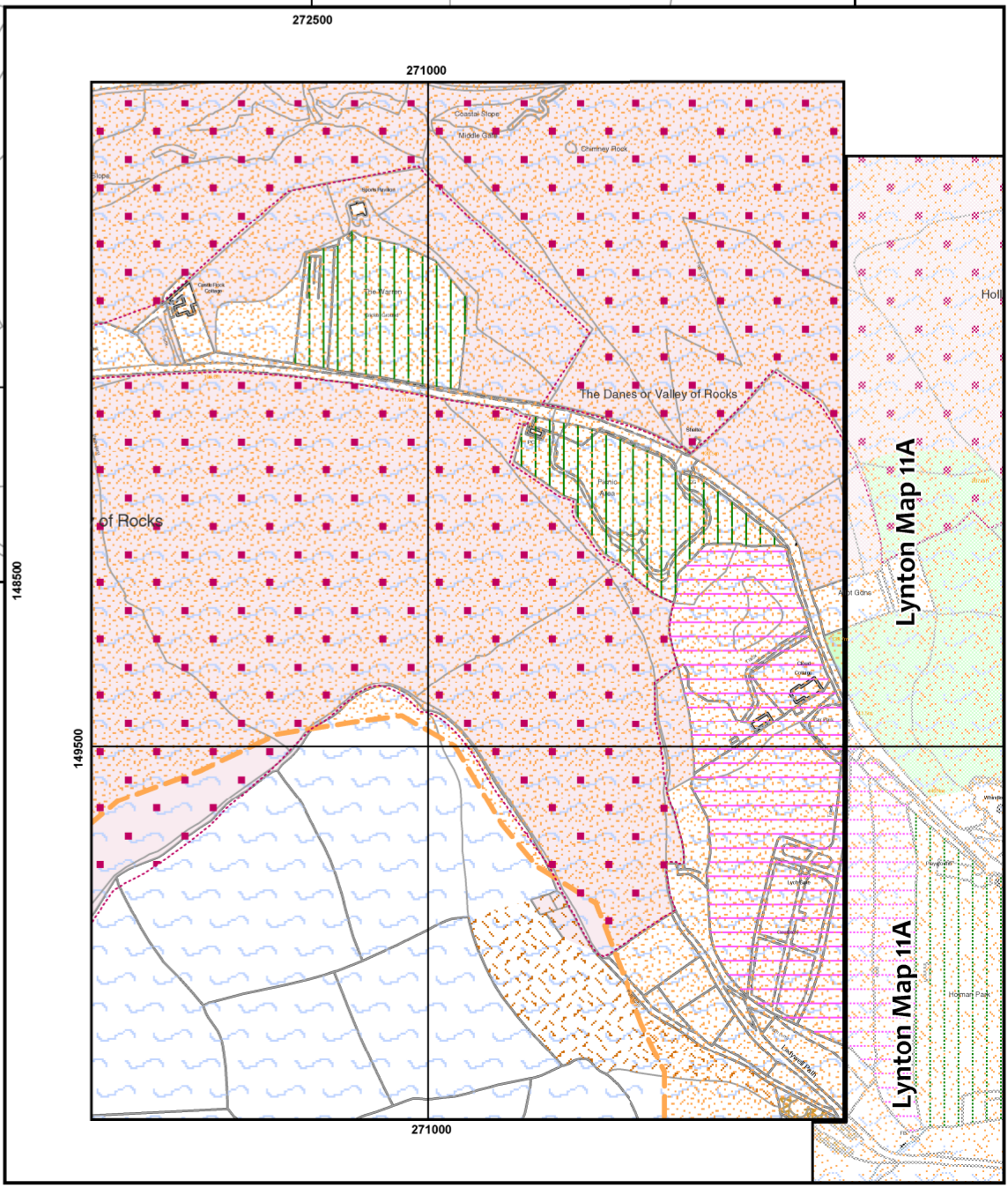
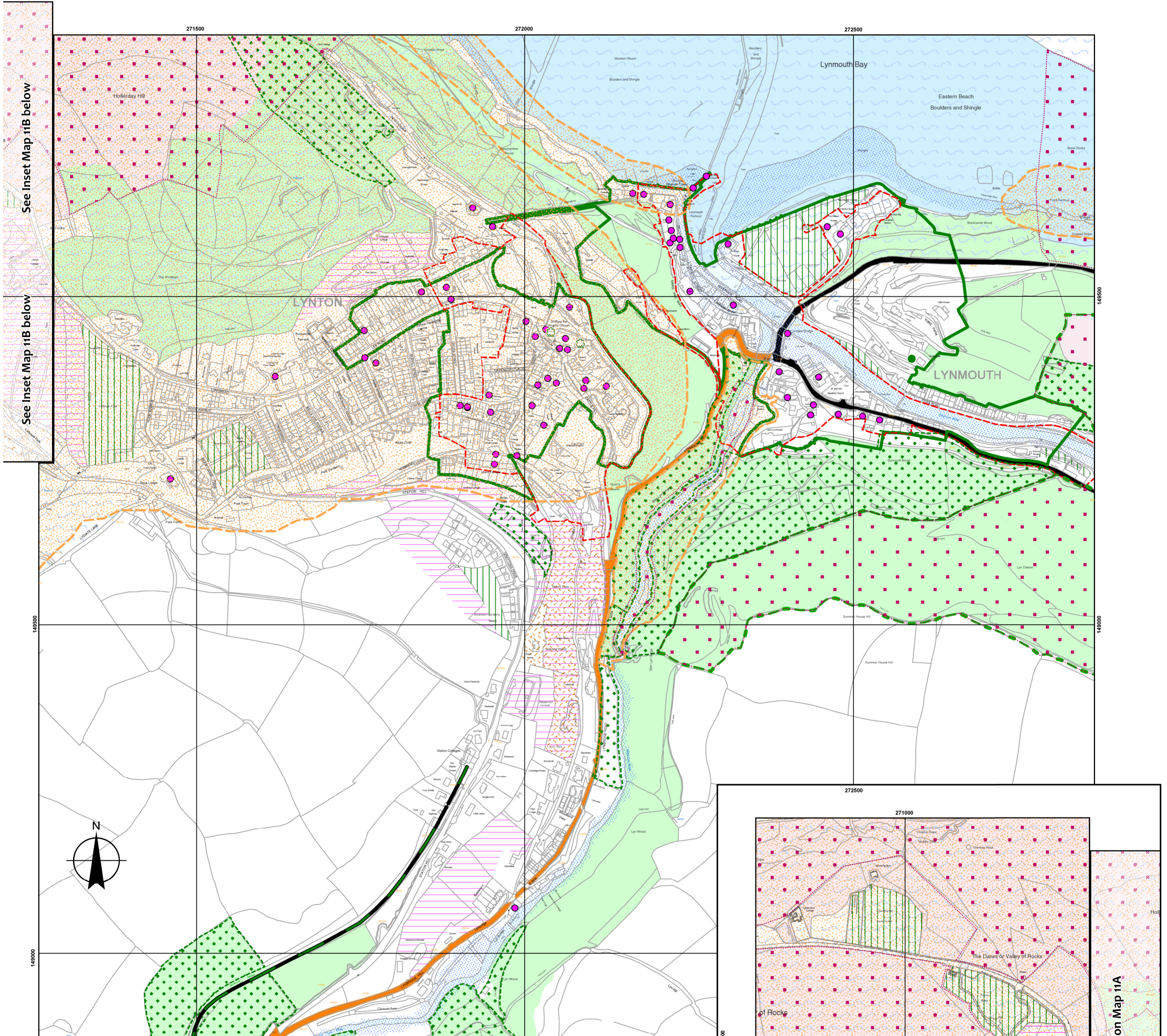


- | | | | | | | |
|--|------------------------------------|-------------------------------------|-----------------------------------|--|-----------------------------|-------------------------|
| Exmoor National Park Boundary | Section 3 - Cliff and Foreshore | Veteran Tree | Important Open Space - Recreation | Flood Zones - 2 and 3 Combined | Exmoor Route Network | |
| Special Areas of Conservation - Exmoor Heaths | Section 3 - Woodland | Groundwater Source Protection Zones | Important Visual Amenity Space | Water Bodies | | A roads |
| Special Area of Conservation - Exmoor & Quantock Oak Woodlands | Section 3 - Moor and Heath | Historic Parks and Gardens | Community Safeguarding Areas | Route of the Lynton to Barnstaple railway (dismantled) | | B road and Access route |
| Site of Special Scientific Interest | Tree Preservation Order - Woodland | Listed Buildings | Heritage Coast | Route of the West Somerset Mineral Line (dismantled) | | County Freight route |
| Local Wildlife Site | Tree Preservation Order - Tree | Scheduled Monuments | Coastal Change Management Area | Local Freight route | | |
| Regionally Important Geological Site | Orchard of Landscape Importance | Conservation Area | | | | |
| Regionally Important Geological Site - Point | Historic Settlement Core | | | | | |

DISCLAIMER
The Policies Map (including Inset Maps) have been produced with the most current data available at the time of print. Some information on the Policies Map is shown with the consent of external organisations. Enquiries regarding any external information should be directed to the relevant organisation.

© Crown copyright and database rights
2015 Ordnance Survey 100024878



Exmoor National Park Publication Draft Local Plan
(including minerals and waste policies) 2011 - 2031



LYNTON &
LYNMOUTH
INSET MAP 11B